

Theoretical and Practical Research in Economic Fields

Biannually

Volume XI

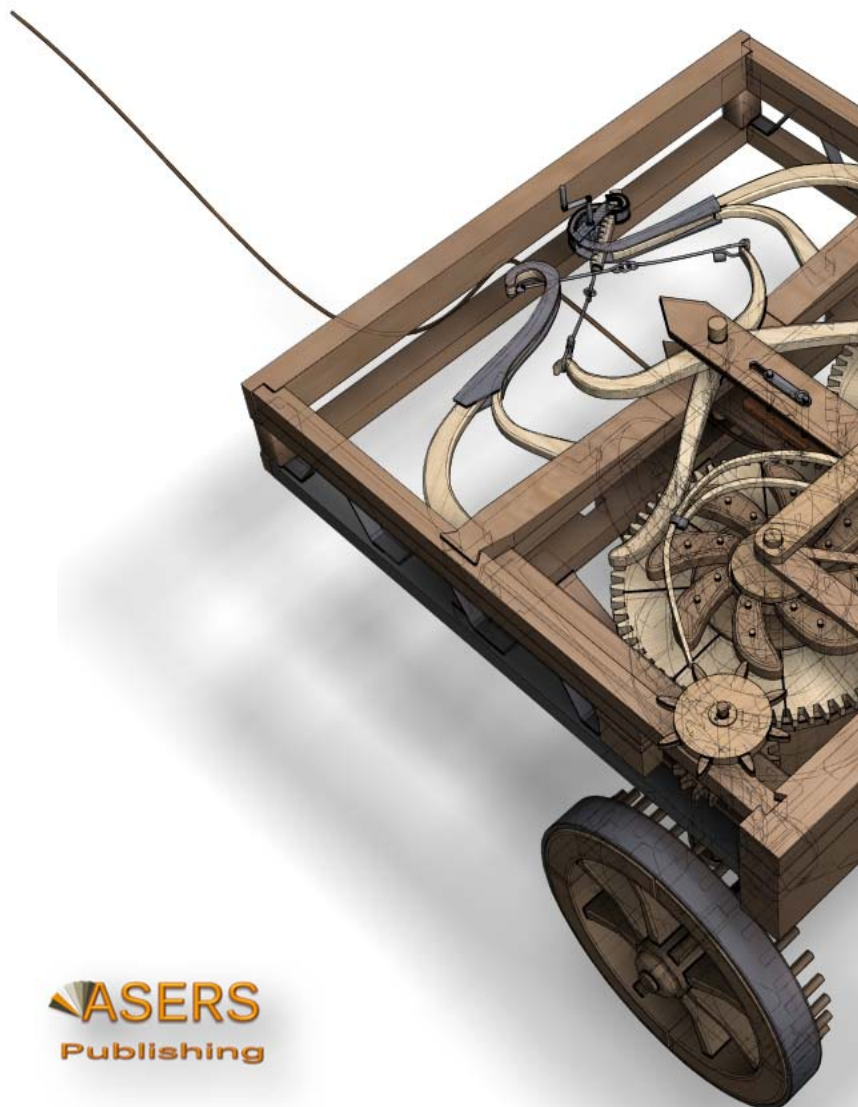
Issue 1(21)

Summer 2020

ISSN 2068 – 7710

Journal **DOI**

<https://doi.org/10.14505/tpref>



Theoretical and Practical Research in Economic Fields



ASERS Publishing is an advanced e-publisher struggling to bring further worldwide learning, knowledge and research. This transformative mission is realized through our commitment to innovation and enterprise, placing us at the cutting-edge of electronic delivery in a world that increasingly considers the dominance of digital content and networked access not only to books and journals but to a whole range of other pedagogic services.

In both books and journals, ASERS Publishing is a hallmark of the finest scholarly publishing and cutting-edge research, maintained by our commitment to rigorous peer-review process.

Using pioneer developing technologies, ASERS Publishing keeps pace with the rapid changes in the e-publishing market.

ASERS Publishing is committed to providing customers with the information they want, when they want and how they want it. To serve this purpose, ASERS publishing offers digital Higher Education materials from its journals, courses and scientific books, in a proven way in order to engage the academic society from the entire world.

Table of Contents:

Editor in Chief

PhD Laura UNGUREANU

Spiru Haret University, Romania

Editor

PhD Ivan KITOV

Russian Academy of Sciences, Russia

Editorial Advisory Board

Monal Abdel-Baki

American University in Cairo, Egypt

Mădălina Constantinescu

SpiruHaret University, Romania

Jean-Paul Gaertner

Ecole de Management de Strasbourg,
France

Piotr Misztal

The Jan Kochanowski University in Kielce,
Faculty of Management and Administration,
Poland

Russell Pittman

International Technical Assistance
Economic Analysis Group Antitrust Division,
USA

Rachel Price-Kreitz

Ecole de Management de Strasbourg,
France

Rena Ravinder

Politechnic of Namibia, Namibia

Laura Gavrilă (formerly Ștefănescu)

Spiru Haret University, Romania

Hans-Jürgen Weißbach

University of Applied Sciences - Frankfurt
am Main, Germany

Aleksandar Vasilev

University of Linkoln, UK

1	Understanding SLL/US\$ Exchange Rate Expectations in Sierra Leone Using Box-Jenkins ARIMA Approach Emerson Abraham JACKSON	5
2	The Armev Curve in Bulgaria (2000-18) – Theoretical Considerations and Empirical Results Aleksandar VASILEV	21
3	Shadow Effect From Laffer Tax Allergy: New Tax Policy Tool to Fight Tax Evasion Dany R. T. DOMBOU	27
4	Lead-Lag and Relationship between Money Growth and Inflation in Turkey: New Evidence from a Wavelet Analysis Turgut TURSOY, Muhammad MAR'I	47
5	Public Spending and Economic Welfare in ECOWAS Countries: Does Level of Development Matter? Santos R. ALIMU	58
6	The Theoretical Aspect of Delphi Techniques and AHP Method Behrije RAMAJ-DESKU, Viora BERISHA, Thellenza LATIFI, Alma LOKA	67

ASERS Publishing

<http://www.asers.eu/asers-publishing>

ISSN 2068 – 7710

Journal's Issue DOI:

[https://doi.org/10.14505/tpref.v11.1\(21\).00](https://doi.org/10.14505/tpref.v11.1(21).00)

Call for Papers

Volume XI, Issue 2(22), Winter 2020

Theoretical and Practical Research in Economic Fields

Many economists today are concerned by the proliferation of journals and the concomitant labyrinth of research to be conquered in order to reach the specific information they require. To combat this tendency, **Theoretical and Practical Research in Economic Fields** has been conceived and designed outside the realm of the traditional economics journal. It consists of concise communications that provide a means of rapid and efficient dissemination of new results, models and methods in all fields of economic research.

Theoretical and Practical Research in Economic Fields publishes original articles in all branches of economics – theoretical and empirical, abstract and applied, providing wide-ranging coverage across the subject area.

Journal promotes research that aim at the unification of the theoretical-quantitative and the empirical-quantitative approach to economic problems and that are penetrated by constructive and rigorous thinking. It explores a unique range of topics from the frontier of theoretical developments in many new and important areas, to research on current and applied economic problems, to methodologically innovative, theoretical and applied studies in economics. The interaction between empirical work and economic policy is an important feature of the journal.

Theoretical and Practical Research in Economic Fields, starting with its first issue, it is indexed in EconLit, RePEc, ProQuest, Cabell Directories and CEEOL databases.

The primary aim of the Journal has been and remains the provision of a forum for the dissemination of a variety of international issues, empirical research and other matters of interest to researchers and practitioners in a diversity of subject areas linked to the broad theme of economic sciences.

All the papers will be first considered by the Editors for general relevance, originality and significance. If accepted for review, papers will then be subject to double blind peer review.

Invited manuscripts will be due till November 10th, 2020, and shall go through the usual, albeit somewhat expedited, refereeing process.

Deadline for submission of proposals: 10th November 2020

Expected publication date: December 2020

Website: <http://journals.aserspublishing.eu/tpref>

E-mail: tpref@aserspublishing.eu

To prepare your paper for submission, please see full author guidelines in the following file: [TPREF Full Paper Template.docx](#), on our site.



DOI: [https://doi.org/10.14505/tpref.v11.1\(21\).02](https://doi.org/10.14505/tpref.v11.1(21).02)

THE ARMEY CURVE IN BULGARIA (2000-18) – THEORETICAL CONSIDERATIONS AND EMPIRICAL RESULTS

Aleksandar VASILEV
University of Lincoln, UK
alvasilev@yahoo.com

Suggested Citation:

Vasilev, A. (2020). The Armev Curve in Bulgaria (2000-18) – Theoretical Considerations and Empirical Results. *Theoretical and Practical Research in Economic Field*, (Volume XI, Summer 2020), 1(21): 21-26. DOI:10.14505/tpref.v11.1(21).02

Article's History:

Received 20th of January 2020; Revised 7th of March 2020; Accepted 5th of April 2020.
Copyright © 2020 by ASERS® Publishing. All rights reserved.

Abstract: *In this paper we provide a theoretical basis for the so-called "Armev curve," the inverted U-shape relationship between the level of government purchases and GDP growth, named after Armev (1995). We use an otherwise standard Keynesian model, augmented with a quadratic relationship between investment and lagged government expenditure, which was documented empirically. This modelling approach is a useful shortcut that aims to capture the common link shared by both variables, namely their dependence on the real interest rate, as suggested also by the extended static IS-LM model. This resulting dynamic relationship is a newly documented stylized fact, at least in Bulgarian data for the period 2000-2018, and the source in the extended Keynesian model that generates an Armev curve for Bulgaria.*

Keywords: armev curve; GDP growth; government purchases; Bulgaria.

JEL Classification: E12; E22.

Introduction

One of the major postulates and policy recommendations of the standard Keynesian theory is that governments could affect economic activity through the use of fiscal policy. In particular, when the economy is in a recession, the government can stimulate aggregate demand by increasing government purchases, by decreasing taxes, or both. Therefore, the theory predicts that a higher level of government purchases can increase the gross domestic product (GDP) of the economy.

Some authors take those recommendations one step further: In addition to the level effect on output, they argue that there is also a systematic growth effect on output. In other words, a higher level of government purchases could affect the growth rate through more public investment in education, healthcare, infrastructure, etc. However, according to Armev (1995), this growth effect is non-linear, and thus not necessarily a positive one. More precisely, Armev (1995) argues that after some level government spending is harmful for economic growth. The existence of a threshold level of government purchases is then a critical issue as it represents an important constraint for policy and public finance consolidation and austerity plans. Such effects deserve a rigorous treatment in order to be understood in depth.

This non-linear relationship between the level of government purchases and GDP growth was a relatively new stylized fact, named "the Armev curve", even though it had been empirically documented earlier in Engen and Skinner (1992), and later in Sheehey (1993). This finding came into stark contrast with a much older empirical relationship, known as the Wagner's law (1883), which postulated that there is only a positive relationship between government spending and economic growth. The finding at that time was due to the fact that the share of government spending in output was very small compared to current, or post-World-War-II levels.

Despite being linked to the Keynesian theory, the Armeij curve was never explicitly derived in a formal manner. Most of the studies in the literature, *e.g.*, Sheehey (1993) and later studies, are empirical and are all based on *ad hoc* assumptions. The interested reader is referred to Afonso and Furceri (2010), Arpaia and Turrini (2007), Dar and Amirkhalkhali (2002), Folster and Henrekson (2001), Gwartney *et al.* (1998), Lin (1994), Sattar (1993), Engen and Skinner (1992), and the references therein. Armeij (1995) himself argues verbally why the curve is hump shaped. We aim to bridge that gap by providing a relevant theoretical basis for the Armeij curve. The reason is that the Keynesian model is static in nature, while growth is a dynamic concept. Without a dynamic extension of the model, no Armeij curve can arise.

We thus start from an otherwise standard Keynesian framework, and extend it another novel stylized fact: the existence of a quadratic relationship between the level of current private investment, and the level of lagged government purchases. The dynamic inter-relationship introduces dynamics in the model in a simple way. We take this underlying dynamic relationship as an empirical regularity and incorporate it in the model. As a suitable testing case we use Bulgaria over the period 2000-18: a country that is both an EU member state, but also still developing. We can argue that the link captures the common inter-dependence on the main interest rate, which might be rigid due to the fact that the monetary authority, or the central bank, is focused on price stability, and not on full-employment considerations. Another possible explanation could be the dynamic negative effects of high debt levels. For now, we leave this interesting interest rate channel for future study.

With this new mechanism in place, the Keynesian framework is now made dynamic, and we can now generate an inverted U-shape relationship between the level of government purchased and output growth. Yet another advantage of the framework is that we can find the approximate threshold-, or congestion level of public spending, *i.e.*, the level of expenditure that maximizes economic growth.

The rest of the paper is organized as follows: In the next section, we present the model setup calibrated to Bulgarian data, and derive the theoretical Armeij curve; the optimal-, or the growth-maximizing level of government purchases is solved determined from both the calibrated theoretical model, as well as from data directly, using the empirical Armeij curve. The two cases are compared and contrasted. The paper then concludes.

1. Model Setup

This section describes a two-period open economy standard Keynesian model with the simple extension, as outlined in the introduction. We need at least 2 periods in the timing of the model in order for the setup to have a dynamic dimension. After all, the Armeij curve features economic growth. The results obtained using a 2-period model can be then easily extended to any number of periods.

We begin with the national income accounting identity

$$Y_t = C_t + I_t + G_t + X_t - M_t, \quad 1.1$$

where Y_t denotes GDP in period t , C_t is private final consumption spending, I_t denotes investment, G_t are government purchases, X_t are exports, and M_t are imports. In other words, output equals the sum of its uses.

Next, aggregate consumption behavior is assumed to be characterized by a standard Keynesian consumption function:

$$C_t = \bar{C} + b(Y_t - T_t), \quad 1.2$$

where $\bar{C} > 0$ denotes the autonomous consumption spending, $0 < b < 1$ is the marginal propensity to consume out of disposable (after-tax) income, and T_t denote lump-sum taxes in period t . Such a relationship has been also documented for Bulgaria in Vasilev (2015b).

Next, in an open economy context, imports are proportional to disposable income, with the degree of proportionality $0 < m < 1$, also referred to as the marginal propensity to imports:

$$M_t = m(Y_t - T_t) \quad 1.3$$

In contrast, since exports depend on foreign countries' demand, which is taken to be exogenous in the model, we will set $X_t = X$, and keep it unchanged.

For the sake of realism, we set total tax revenue to be proportional to income, or:

$$T_t = tY_t, \tag{1.4}$$

where $0 < t < 1$ is the average (effective) tax rate. As in Vasilev (2015a), that corresponds to a proportional tax system, where all forms of income - labor, capital, and profit (corporate) income are all taxed at the same rate of 10 percent. Given that total revenues are now endogenous, the government will use spending as an instrument to achieve a balanced budget, which is what is observed in Bulgarian data over most of the period 2000-18. With an Armey curve a higher spending feeds into higher future output, and thus higher future tax revenue.

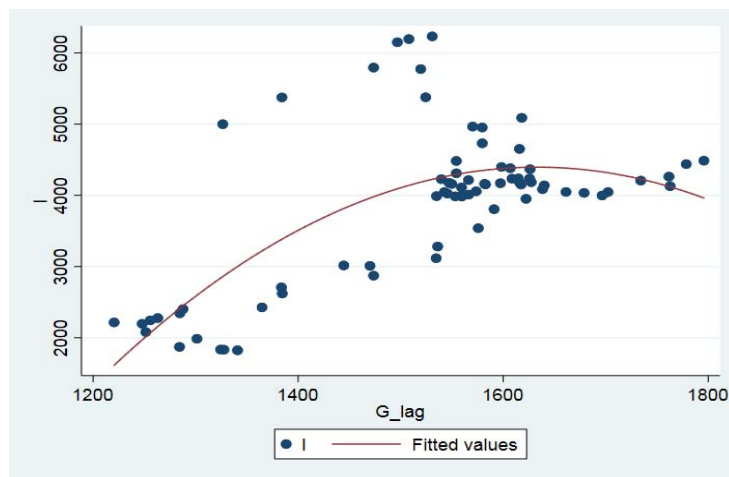
Lastly, the novelty in this paper is that the model will try to capture the (partial) crowding out effect of government purchases, and the fact that more public spending discourages private saving and leaves less resources for private investment tomorrow. (As mentioned earlier, the lagged effect could be driven by some stickiness exhibited in the behavior of the interest rate.) The intertemporal price of those resources is the real interest rate, hence there is a direct link between the two variables, which can be represented after some simple algebra as:

$$I_t = f(G_{t-1}), \tag{1.5}$$

where $f(.) > 0, f'(. < 0$.

The assumptions imposed on this function are easily verified using data on Bulgaria over the period 2000-18, where all data is from NSI (2019). As documented in Figure 1 (where G_{lag} denotes G_{t-1}), a non-linear relationship was established when a quadratic regression specification was fitted through the scatterplot. In addition, the formal regression estimation output is presented in Figure 2. R^2 is 48 percent, which means that the model explains half of the variation in investment, and all variables are statistically significant.

Figure 1. The facts



Source: National Statistical Institute, Bulgaria (2019)

Figure 2. Regression Output: Investment Function

Source	SS	df	MS	Number of obs	=	74
Model	41454837.5	2	20727418.7	F(2, 71)	=	33.33
Residual	44151447.4	71	621851.372	Prob > F	=	0.0000
Total	85606284.9	73	1172688.83	R-squared	=	0.4842
				Adj R-squared	=	0.4697
				Root MSE	=	788.58

I	Coef.	Std. Err.	t	P> t	[95% Conf. Interval]
G_lag	53.39736	12.18918	4.38	0.000	29.09281 77.7019
G_lagsq	-.0163497	.0040864	-4.00	0.000	-.0244977 -.0082018
_cons	-39202.68	9035.525	-4.34	0.000	-57219 -21186.35

Now that the assumed relationship between investment and lagged government purchases has been empirically verified, we proceed and introduce it into the model framework. In addition, we also need to fix initial investment. Therefore, in the first period, we will assume that private investment is pre-determined, and set to some exogenous level, or $I_1 = \bar{I}$. Therefore, in period 1,

$$Y_1 = C^- + b(Y_1 - tY_1) + \bar{I} + G_1 + X^- - m((Y_1 - tY_1)). \quad 1.6$$

Similarly, in period 2.

$$Y_2 = C^- + b(Y_2 - tY_2) + f(G_1) + G_2 + X^- - m(Y_2 - tY_2). \quad 1.7$$

Differencing output produces the following expression:

$$\Delta Y = Y_2 - Y_1 = b(1 - t)\Delta Y + f(G_1) - \bar{I} + G_2 - G_1 - m(1 - t)\Delta Y, \quad 1.8$$

Or

$$\Delta Y = \frac{1}{1 - (b - m)(1 - t)} [f(G_1) - \bar{I} + G_2 - G_1] \quad 1.9$$

Divide now by Y to transform the expression into output growth rate to obtain

$$\Delta Y / Y = \frac{1}{1 - (b - m)(1 - t)} [f(G_1) - \bar{I} + G_2 - G_1] \quad 1.10$$

Thus, the effect of government purchases on economic growth equals

$$\partial \left(\frac{\Delta Y}{Y} \right) / \partial G_1 = \frac{1}{1 - (b - m)(1 - t)} [f'(G_1) - 1] \quad 1.11$$

In other words, depending on the level of government purchases G_1 , the effect of government spending on output growth can be either positive, zero, or negative. For low levels of spending, $f'(\cdot) > 1$, i.e., the demand effect is very large (like it was during the Great Depression), and the effect is positive. In contrast, for large levels of spending, the effect is negative $f'(\cdot) < 1$. There could be also some value for intermediate G_1 for which $f'(G_1) = 1$, so there is zero effect on growth.

We now use the mean level of government spending over the period 2000-18, $G_{avg} = 1526.466$ (in BGN mln.), in Bulgaria, as well as the estimated functional form for $f(\cdot)$ in order to make some computational experiments. In particular

$$f'(G_{avg}) - 1 = 53.397 - 0.016 * 2G_{avg} - 1 = 3.551 > 0 \quad 1.12$$

or the effect on growth at the average level of public expenditure on growth has been positive. This result shows that spending can be increased further in order to speed up economic growth. In particular, we can obtain the model-predicted threshold level of government purchases, denoted by G^* , that maximizes economic growth by setting $f'(G^*) = 1$ i.e., $G^* = 1637.4$. In Bulgarian data, we observe such values (in BGN mln.) and above from 2016 onwards, which is an indication that the economy is now operating beyond the peak of the Arme curve, and the government needs to lower the level of government spending.

Figure 3. Arme curve regression

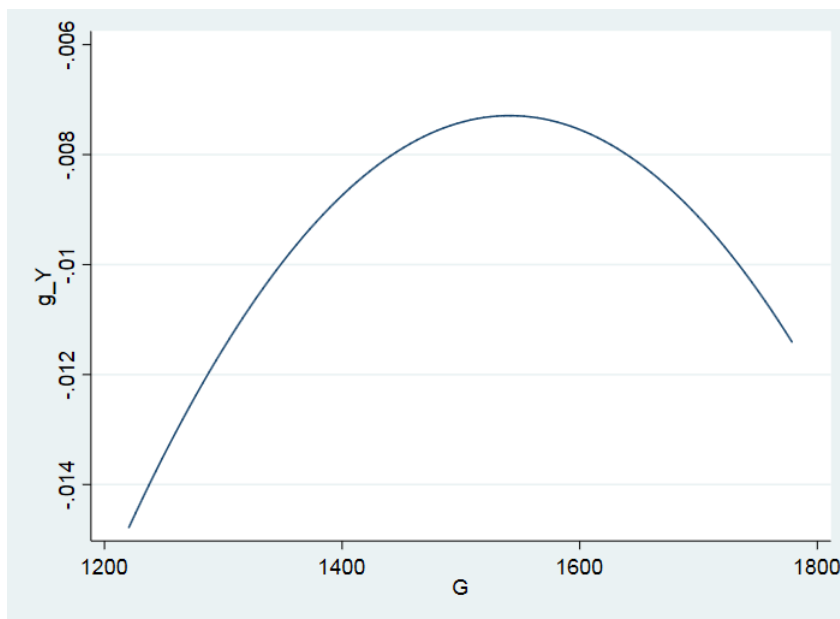
Source	SS	df	MS	Number of obs	=	74
Model	.000269636	2	.000134818	F(2, 71)	=	1.39
Residual	.006873452	71	.000096809	Prob > F	=	0.2551
Total	.007143087	73	.000097851	R-squared	=	0.0377
				Adj R-squared	=	0.0106
				Root MSE	=	.00984

g_Y	Coef.	Std. Err.	t	P> t	[95% Conf. Interval]
G	.0002247	.0001645	1.37	0.176	-.0001033 .0005528
Gsq	-7.29e-08	5.54e-08	-1.32	0.193	-1.83e-07 3.76e-08
_cons	-.180432	.1213136	-1.49	0.141	-.4223245 .0614605

Alternatively, we can estimate the Armeý curve empirically, and obtain the growth-maximizing level of government spending by running a quadratic regression of growth on government purchases. The results are presented in the Figure 3, where g_Y denotes output growth rate, G is the level of government purchases, and Gsq is the square of government purchases. According to the OLS estimates produced, the growth of the economy is maximized at $G^* = 1572.43$ (in BGN mln.), which is lower than the level predicted by the calibrated Keynesian model above. This value corresponds to the level observed in 2012.

The qualitative conclusion - that the economy is now operating beyond the peak of the Armeý curve, and the government needs to lower the level of government spending - continues to hold. In addition, given the low R^2 , any inference based on this regression is to be taken with some caution. This result can be also seen from the fitted Armeý curve presented in Figure 4. Thus, the presence of a peaking relationship between the level of government spending and economic growth has been established both theoretically and empirically in Bulgaria over the period 2000-18.

Figure 4. Empirical Armeý curve in Bulgaria, 2000-18



Source: Author's calculations

Conclusions

In this paper we provide a theoretical basis for the so-called "Armeý curve," the inverted U- shaped relationship between the level of government purchases and GDP growth, named after Armeý (1995). We use an otherwise standard Keynesian model, extended with a quadratic relationship between investment and government expenditure, which is a new documented stylized fact in Bulgarian data for the period 2000-2018. The link is through the dependence of both on the interest rate. The model is able to generate a realistic Armeý curve for Bulgaria through this new transmission channel alone.

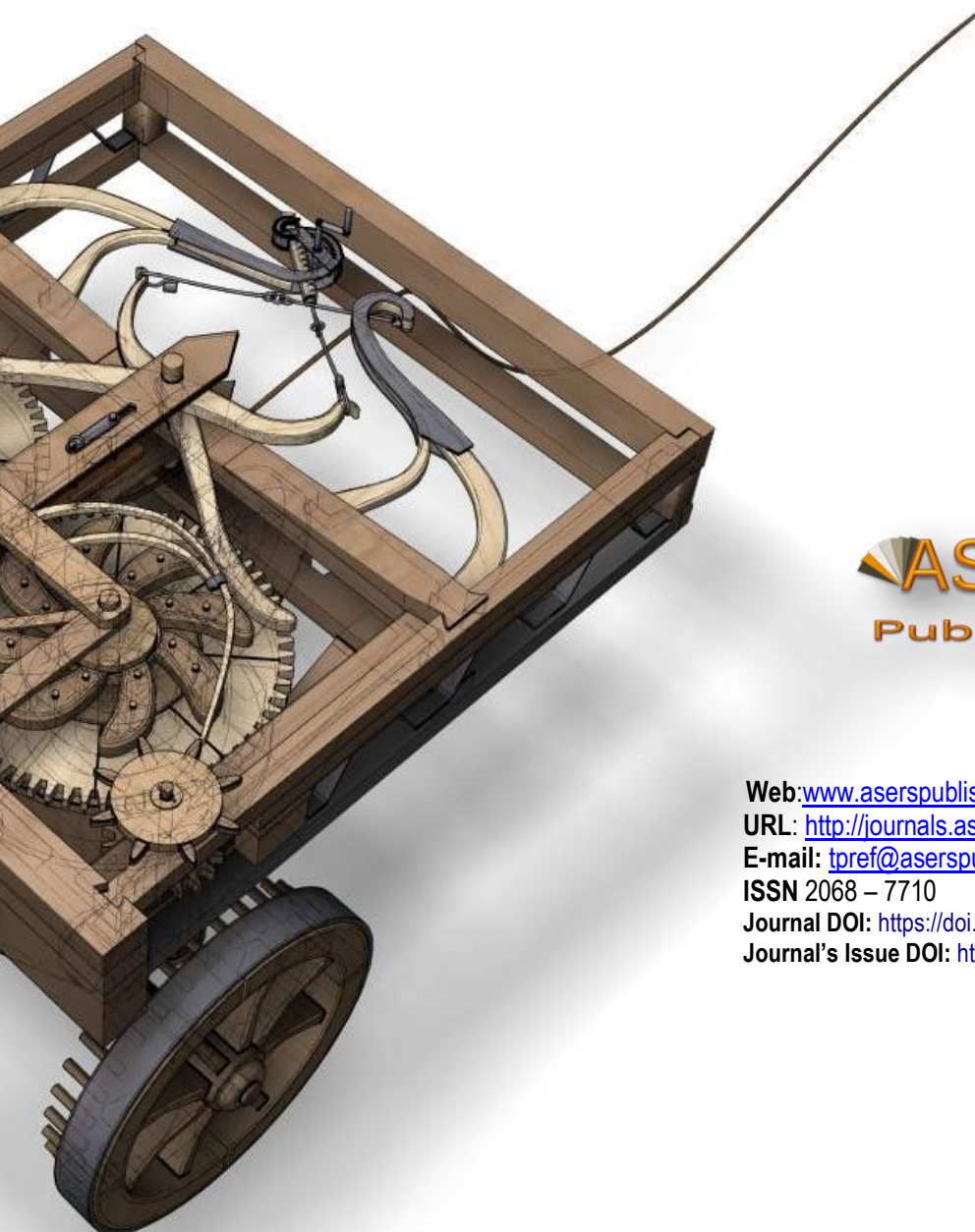
As a future extension, we may consider next a dynamic IS-LM model, in order to provide more detail on the interest rate link outlined above. The ambition is eventually to construct a micro-founded New Keynesian general equilibrium model with physical capital, maybe along the lines of Barro (1990) and Easterly and Rebelo (1993), and augmented with sticky prices, in order to understand better, the quantitative effect of this new propagation mechanism.

References

- [1] Afonso, A. and Furceri, D. 2010. Government size, composition, volatility and economic growth. *European Journal of Political Economy*, 26: 517-32. DOI: <https://doi.org/10.1016/j.ejpoleco.2010.02.002>
- [2] Armeý, R. 1995. *The freedom revolution*. Washington, DC: Rogney Publishing Co

- [3] Arpaia, A. and Turrini. 2007. Government expenditure and economic growth in the EU: long-run tendencies and short-run adjustment. *SSRN paper* 2004461/ 2007. https://papers.ssrn.com/sol3/papers.cfm?abstract_id=2004461
- [4] Barro, R.J. 1990. Government spending in a simple model of economic growth. *Journal of Political Economy*, 98: 103-125. DOI: <https://doi.org/doi:10.1086/261726>
- [5] Dar, A., and Amirkhalkhali, S. 2002. Government size, factor accumulation, and economic growth: evidence from OECD countries. *Journal of Policy Modeling*, 24: 679-692. DOI: [https://doi.org/10.1016/S0161-8938\(02\)00163-1](https://doi.org/10.1016/S0161-8938(02)00163-1)
- [6] Easterly, W. and Rebelo, S. 1993. Fiscal policy and economic growth. *Journal of Monetary Economics*, 32: 417-458. DOI: <https://doi.org/10.3386/w4499>
- [7] Engen, E.M. and Skinner, J.S. 1992. Fiscal policy and economic growth. *NBER Working Paper*
- [8] Folster, S. and Henrekson, M. 2001. Growth effects of government expenditure and taxation in rich countries. *European Economic Review*, 45: 1501-1520. <https://www.ifn.se/Wfiles/wp/wp503.pdf>
- [9] Gwartney, J., Holcombe, R., and Lawson, R. 1998. The Scope of Government and the Wealth of Nations. *The Cato Journal*, 18: 163-64. <http://myweb.fsu.edu/jdgwartney/Documents/Gwartney%20Lawson%20Cato%201998%20paper.pdf>
- [10] Lin, S.A. 1994. Government spending and economic growth. *Applied Economics*, 26: 83-94.
- [11] Sattar, Z. 1993. Public expenditure and economic performance: A comparison of developed and low-income developing countries. *Journal of International Development*, 5: 27-49.
- [12] Sheehey, E.J. 1993. The Effect of government size on economic growth. *Eastern Economic Journal*, 321-328. https://web.holycross.edu/RePEc/eej/Archive/Volume19/V19N3P321_328.pdf
- [13] Vasilev, A. 2015b. Modeling Real Private Consumption Expenditure in Bulgaria after the Currency Board Implementation (1997-2005). *Zagreb International Review of Economics and Business*, 18: 81-89. DOI: <https://doi.org/10.1515/zireb-2015-0005>
- [14] Vasilev, A. 2015a. Welfare effects of flat income tax reform: the case of Bulgaria. *Eastern European Economics*, 53: 205-220. DOI: <https://doi.org/10.1080/00128775.2015.1033364>
- [15] Wagner, A. 1883. *Finanzwissenschaft*, Leipzig.
- [16] National Statistical Institute. *Aggregate Statistical Indicators*. Available on-line at www.nsi.bg.

ASERS



 **ASERS**
Publishing

Web: www.aserspublishing.eu

URL: <http://journals.aserspublishing.eu/tpref>

E-mail: tpref@aserspublishing.eu

ISSN 2068 – 7710

Journal DOI: <https://doi.org/10.14505/tpref>

Journal's Issue DOI: [https://doi.org/10.14505/tpref.v11.1\(21\).00](https://doi.org/10.14505/tpref.v11.1(21).00)