

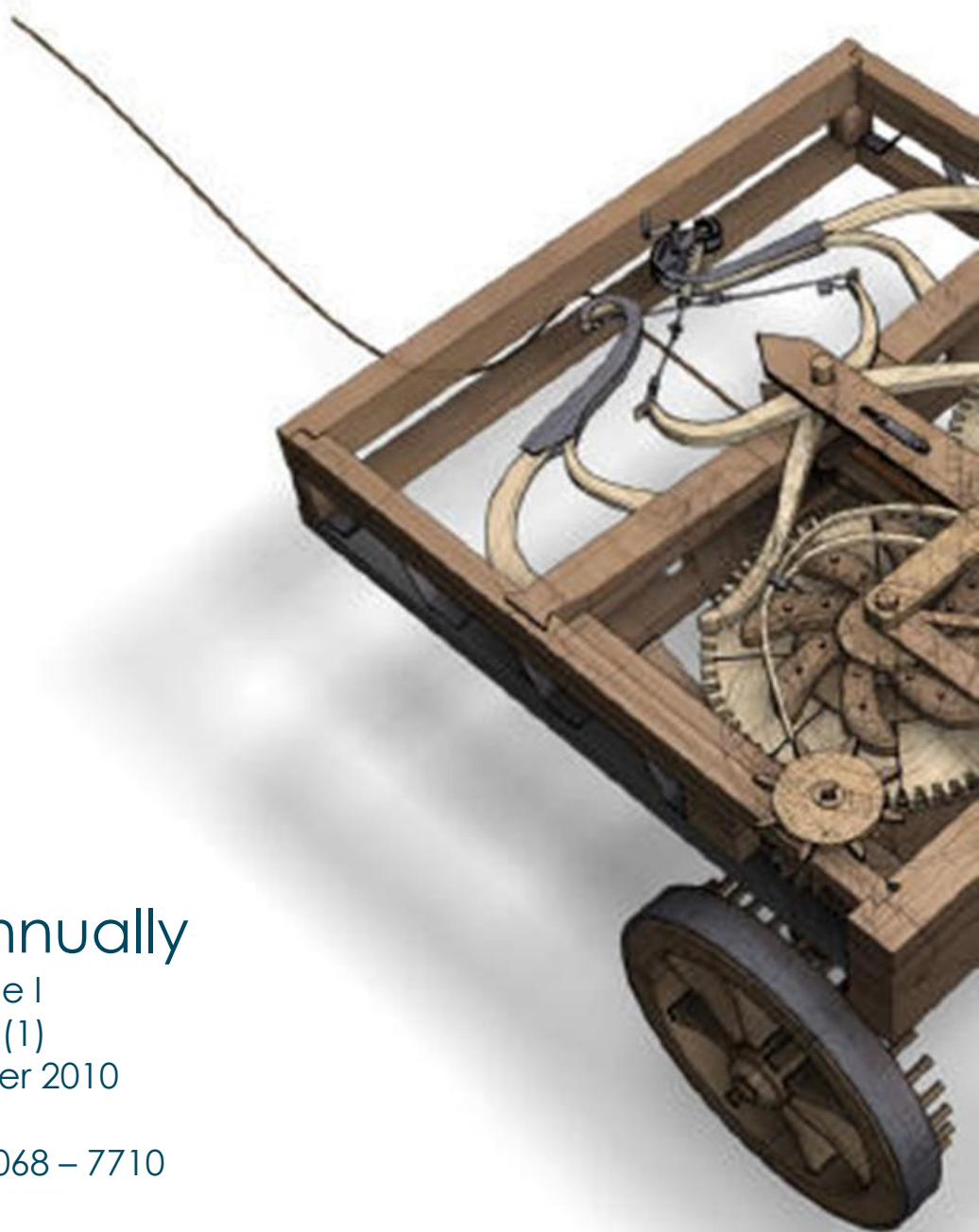
ASERS

Theoretical and Practical Research
in Economic Fields

Biannually

Volume I
Issue 1(1)
Summer 2010

ISSN 2068 – 7710



Editor in Chief

Laura Ungureanu
Spiru Haret University, Romania

Editor

Ivan Kitov
Russian Academy of Sciences,
Russia

Editorial Advisory Board

Monal Abdel-Baki
American University in Cairo,
Egypt

Huseyin Arasli
Eastern Mediterranean University,
North Cyprus

Madalina Constantinescu
Spiru Haret University, Romania

Jean-Paul Gaertner
Ecole de Management de Strasbourg,
France

Shankar Gargh
Editor in Chief of Advanced in
Management, India

Piotr Misztal
Technical University of Radom,
Economic Department, Poland

Marco Novarese
University of Piemonte Orientale, Italy

Rajesh K. Pillania
Management development Institute,
India

Russell Pittman
International Technical Assistance
Economic Analysis Group Antitrust
Division, USA

Rachel Price-Kreitz
Ecole de Management de Strasbourg,
France

Rena Ravinder
Politechnic of Namibia, Namibia

Andy Stefanescu
University of Craiova, Romania

Laura Stefanescu
Spiru Haret University, Romania

Hans-Jürgen Weißbach, University of
Applied Sciences - Frankfurt am Main,
Germany

Contents:

1	Game complete analysis of Bertrand duopoly David Carfi Emanuele Perrone University of Messina ...4	4	Defragmentation of economic growth with a focus on diversification: evidence from russian economy Andrey A. Gnidchenko Institute of Economic Forecasting Russian Academy of Sciences ... 43
2	Crisis in the euro area: cooperative game solutions as new policy tools David Carfi Daniele Schilirò University of Messina ... 22	5	The evolution of firm size distribution Ivan O. Kitov Institute for the Geospheres' Dynamics, Russian Academy of Sciences ... 80
3	Credit risk tools: an overview Francesco P. Esposito University of Southampton, United Kingdom ... 36	6	The nexus between public expenditure and inflation in the mediterranean countries Cosimo Magazzino Roma Tre University, Italy ... 88

Call for Papers Winter_Issue 2011

Theoretical and Practical Research in Economic Fields

Many economists today are concerned by the proliferation of journals and the concomitant labyrinth of research to be conquered in order to reach the specific information they require. To combat this tendency, **Theoretical and Practical Research in Economic Fields** has been conceived and designed outside the realm of the traditional economics journal. It consists of concise communications that provide a means of rapid and efficient dissemination of new results, models and methods in all fields of economic research.

Theoretical and Practical Research in Economic Fields publishes original articles in all branches of economics – theoretical and empirical, abstract and applied, providing wide-ranging coverage across the subject area.

Journal promotes research that aim at the unification of the theoretical-quantitative and the empirical-quantitative approach to economic problems and that are penetrated by constructive and rigorous thinking. It explores a unique range of topics from the frontier of theoretical developments in many new and important areas, to research on current and applied economic problems, to methodologically innovative, theoretical and applied studies in economics. The interaction between empirical work and economic policy is an important feature of the journal.

Theoretical and Practical Research in Economic Fields, starting with its first issue, will be indexed in [CEEOL](#) and very soon in [IndexCopernicus](#) and [EBSCO](#) databases.

The primary aim of the Journal has been and remains the provision of a forum for the dissemination of a variety of international issues, empirical research and other matters of interest to researchers and practitioners in a diversity of subject areas linked to the broad theme of economic sciences.

All the papers will be first considered by the Editors for general relevance, originality and significance. If accepted for review, papers will then be subject to double blind peer review.

Invited manuscripts will be due till September 25st, 2010, and shall go through the usual, albeit somewhat expedited, refereeing process.

Deadline for submission of proposals:	25 st September 2011
Expected Publication Date:	15 th December 2011
Web:	www.asers.eu/journals/tpref/
E-mail:	tpref@asers.eu

To prepare your paper for submission, please see full author guidelines in the following file: [TPREF_Full_Paper_Template.doc](#), then send it via email at tpref@asers.eu.

CREDIT RISK TOOLS: AN OVERVIEW

Francesco P. ESPOSITO*

School of Electronics and Computer Science, University of Southampton, **United Kingdom**
 INRA, Jouy-en-Josas, Paris, **France**
francesco.p.esposito@gmail.com

Abstract

This document presents several Credit Risk tools which have been developed for the Credit Derivatives Risk Management. The models used in this context are suitable for the pricing, sensitivity/scenario analysis and the derivation of risk measures for plain vanilla credit default swaps (CDS), standardized and bespoke collateralized debt obligations (CDO) and, in general, for any credit risk exposed A/L portfolio. In this brief work we compute the market implied probability of default (PD) from market spreads and the theoretical CDS spreads from historical default frequencies. The loss given default (LGD) probability distribution has been constructed for a large pool portfolio of credit obligations exploiting a single-factor gaussian copula with a direct convolution algorithm computed at several default correlation parameters. Theoretical CDO tranche prices have been calculated. We finally design stochastic cash-flow stream model simulations to test fair pricing, compute credit value at risk (CV@R) and to evaluate the one year total future potential exposure (FPE) and derive the value at risk (V@R) for a CDO equity tranche exposure.

Keywords: interest rate swap, spot rate term structure, credit default swap, probability of default, copula function, direct convolution, loss given default, collateralized debt obligation, exposure at default, stochastic cash-flow stream model, value at risk, credit value at risk, future potential exposure, Monte Carlo simulation.

JEL Classification:

1. Introduction

This brief note presents several applications of credit risk tools developed for the credit derivatives risk management.

The main ingredients are the PD of each single credit-risk bearing exposure, whose hazard rate are estimated with two different methods, and the LGD probability distribution which is constructed via a direct method of calculation. The derivatives considered here synthetically embody the net exposures for different credit operations between two or more counter-parties. The CDS spread represents the fair payment for the stripped risk held by the creditor on a single counter-party's obligation which pays a libor plus cash flow up to maturity. The risk-neutral spread and/or upfront paid on a CDO tranche is the expected present value of the capital loss stood by the tier x capital layer of a financial entity whose asset side is composed by a pool of credits. The main risk components can be suitably adapted to the internal rating-based approach (IRB) to credit risk in order to include specific methods of estimation of the PD term structure, the LGD distribution and the EAD computation. Because of their structure and purposes at the cost of light modifications, the credit derivative algorithms developed so far can be exploited for the evaluation of the credit valuation adjustment (CVA) and the estimation of the Economic Capital for any credit risk exposed A/L portfolio.

The structure of each section is very concise and the formulas presented in this work certainly imply broader specifications which have been kept aside to leave the treatment fluent and bring the focus on the results. The organization of this work is as follows. Section 2 presents the main risk components, i.e. the market credit spreads and PD; an algorithm for switching from one to another is depicted. Section 3 expands the risk components with the development of the LGD distribution function and presenting the pricing function for a generic collateralized debt obligation. Section 4 incorporates previously developed credit risk tools to provide fairly general credit risk measures, which are the credit adjusted V@R and the FPE distribution.

2. CDS Spreads and Probability of Default

In this section an algorithm for estimating the PD from market spreads is presented. On the other hand, given a PD term structure or a hazard rate function, theoretical CDS spreads can be calculated.

Assuming non-stochastic recovery rate R and continuous compounding regime, the fair-valuation CDS spread on maturity T is the s_T such that

$$s_T \int_0^T d\tau B_\tau P_\tau = (1 - R) \left\{ 1 - P_0 - \int_0^T dP_\tau B_\tau \right\} \quad (1)$$

Where P_τ - is the survival probability function ($PD_\tau = 1 - P_\tau$) and B_τ is the discounting factor at tenor τ implied in the term structure of the interest rate swaps. The pricing formula (1) states that the expected present value of the total cash-flow stream equals the expected present loss for the derivative exposure, i.e., the exposure at default until the maturity of the swap contract.

In order to estimate the market implied default probabilities from the set of market credit default swaps $\{s_{\tau_j}, j = 1, \dots, n\}$ at current time 0, a procedure of forward induction pivoting on (1) has been constructed. The figure 1 shows the market CDS spreads available on 22/06/2006 which have been interpolated at ISDA compliant cash-flow dates. The sample is provided by the Mark-it price data for the CDX.NA.HY series 6 index excluding two items, namely the *Charter Comms Holdings* and the *Tembec Industrials*, because of their extreme values in the available sample data. The companion figure 2 depicts the (adjusted) implied default probabilities of the CDS market sample.

The table 1 presents the Moody's estimated default frequencies (EDF) within the period 1983-1999. Assuming survival probability functions with constant hazard rate matching the 5 year EDF (fig.3), the equation (1) has been employed to construct implied theoretical CDS spreads term structures for each rating class on 03/12/2010 (fig.4).

3. LGD distribution and CDO tranche pricing

In this section we present the algorithm for the estimation of the LGD distribution. Assuming a latent factors default correlation structure, the probability distribution function of the LGD of a credit basket portfolio can be computed as the convolution of the conditional PD of each single exposure weighted with the probability structure of the latent factors. Synthetically:

$$LGD(x) = \int dP(m)\{g_1(x_1|m) * \dots * g_n(x_n|m)\} \quad (2)$$

where $g_i(x_i|m)$ is the (conditional) PD of the j^{th} asset. The g_j have been constructed by mapping a Gaussian copula onto the estimated credit event probabilities.

In the figure 5 we compute the LGD distribution for a large pool portfolio of credits ranging from Aaa to Caa1-C with equal weights on 03/12/2010 along a five year horizon terminating on 20/12/2015.

Assuming continuous compounding regime, the fair-valuation CDO tranche A upfront payment plus spread are the u and s such that

$$u + s \int_0^T dt B_\tau (1 - E[\mathcal{L}_\tau | \mathcal{F}_0]) = E[\mathcal{L}_0 | \mathcal{F}_0] + \int_0^T B_\tau dE[\mathcal{L}_\tau | \mathcal{F}_0] \quad (3)$$

The $E[\cdot | \mathcal{F}_0]$ is the expectation operator conditional on the information set available at current time. The symbol \mathcal{L}_τ indicates the τ horizon LGD of the layer A notional capital invested in the SPV.

Again, the pricing formula (3) states that the expected present value of the total cash-flow stream equals the expected present loss for the derivative exposure, i.e., the exposure at default until the maturity of the swap contract. In figure 6 theoretical full upfront prices at different levels of correlation have been computed for the first two tranches, the 0-4% and the 4-8% notional layers, for a theoretical basket portfolio Q containing 90 equally weighted names ranging between Aaa and Baa2 Moody's rating buckets and constant recovery rate $R=40\%$. The valuation has been performed with respect to the reference date 03/12/2010 and maturity 20/12/2013. The prices are expressed in percentage units of the unitary tranche.

4. CV@R and Future Potential Exposure

In order to evaluate the correct CDO pricing on a stochastic basis, we have designed and implemented a cash-flow stream model simulation. The basic model components consist in the mapping of the complete portfolio flow of payments and the measurement of the balance sheet consistencies during time evolution. The received/paid cash amounts are accumulated / deducted from a synthetic interest rate generating cash account which can run negative. Stochastic default times $\tau(\omega)$ are generated via single-factor gaussian copula random numbers mapped onto the prescribed PD. Every random time for each generated cash-flow history sample terminates the corresponding residual cash-flow stream if it happens before maturity. The figure 7 shows the theoretical (bars) and simulated (crosses) frequencies of the number of defaults generated for the sample basket Q with 0.3 default correlation along the 3 years' time horizon running from the settlement date 03/12/2010 to the maturity date 20/12/2013.

Because of the high flexibility of their structure, Monte Carlo simulations are suitable to allow the user to investigate important characteristics of complex stochastic systems. Indeed, the system which has been just designed can achieve the estimation of several important measures for the credit risk management.

According to (3) the expected present value of a CDO tranche must match the expected present loss, i.e. 22.25%. In economic terms this means that if at time 0 the CDO value is paid into the synthetic cash account, its forward expected value would be zero. The first simulation of this work is run under the described framework plus uniform stochastic recovery centered at $R=40\%$. The investor is assumed to have sold protection on the 0-4% equity tranche on the basket of credits Q . The full upfront paid by the protection buyer is poured into the cash account on time 0. As it was expected, the average terminal cash value is not significantly different from zero. The figure (8) shows the histogram details of the CDO tranche terminal value at maturity, excluding the 0 defaults sub-sample. The tranche consists in the 0-4% (40 €, notional and 8.9 euro, upfront) of the basket Q worth 1,000 euro, notional. The sample trials which incur 0 defaults terminate at +9.2 euro, with an empirical frequency of 49.3%. The figure (8) presents the remaining 50.7% of the sample forward values which concentrate in the neighborhoods of the portfolios corresponding to each of the sustainable 6 default events. The simulation output consists in the portfolio forward exposure at default. Finally the Monte Carlo study allows us to compute the Credit Value at Risk ($CV@R$) of the portfolio at any probability level, which specifically has been calculated at 5% and 10% probability over the time horizon of 3 years. The sought values are $CV@R(5\%,3y)=-31.66$ €, and $CV@R(10\%,3y)=-18.86$ €.

The system which has just been described can be easily modified to study the balance-sheet evolution of a financial entity which invests into *libor plus* paying obligors and redistributes the revenues between obliges with different seniorities. This program can be regarded as a fully funded cash-flow CDO, with a prescribed cascade redemption scheme. The results of this simulation have not been reported by this work.

The last Monte Carlo study combines together the features of the previously illustrated credit risk tools with a market risk estimation ability in order to provide an instrument capable of deriving measures of the total future potential exposure (FPE) and the $V@R$ of a portfolio of credit derivatives.

With the term *Future Potential Exposure* we mean here the probability distribution of the exposure to a financial obligation evaluated at a future instant in time. By the term *exposure* is intended the market value or replacement cost of the obligation plus the total P/L to date.

Building up on the previous simulation, the total cash-flow stream of the unfunded synthetic portfolio is evaluated at 1 year since settlement, immediately after the ISDA payment date, i.e. on 21/12/2011, when the tranche is assumed to be unwound purchasing an equivalent protection on the residual tranche.

Regarding the simulated dynamics, although the model assumptions are quite restrictive, the understanding of the structure of the stochastic system and the sensitivity/scenario analysis can provide great insight for the sake of timely and effective risk capital allocation and risk management. The market factors which determine the CDO tranche prices are the CDS spreads and the default correlations, which are a direct expression of the credit conditions of the financial markets. In this study the credit conditions remain unchanged during the 1 year simulation, while at the evaluation time the markets spreads are uniformly shocked by a multiplicative stochastic factor that has a 10% yearly volatility. The default correlation parameter (0.3) remains unchanged. In order to drastically reduce the computational time, another assumption is taken. The manners in which 6 items can be drawn from a 90 items pool is about 670 millions, therefore only two hypothesis are investigated: the first one, when defaults are assumed to happen from the least likely forward and the second one, when defaults are assumed to happen from the most likely backward, respectively, providing the highest and lowest prices. The numbers of defaults that happen on the evaluation date conform to the expected frequencies. Actually, considering the low spread levels at the shortest maturities and the relatively small time horizon, the simulated market price distribution for the pool components under the two scenarios is not significantly different. Hence, we take into account only the conservative hypothesis.

In figure 9 the unwinding price frequency distribution of the equity tranche of the Q basket on 21/12/2011. The final figure (10) shows the future potential total exposure of the equity tranche under the simulation dynamics. We have estimated the forward $V@R$ measures, comprehensive of the credit and market risk embedded into the derivative exposure.

The sought values are $V@R(5\%,1y)=-14.26$ € thin space and the $V@R(10\%,1y)=-7.89$ €.

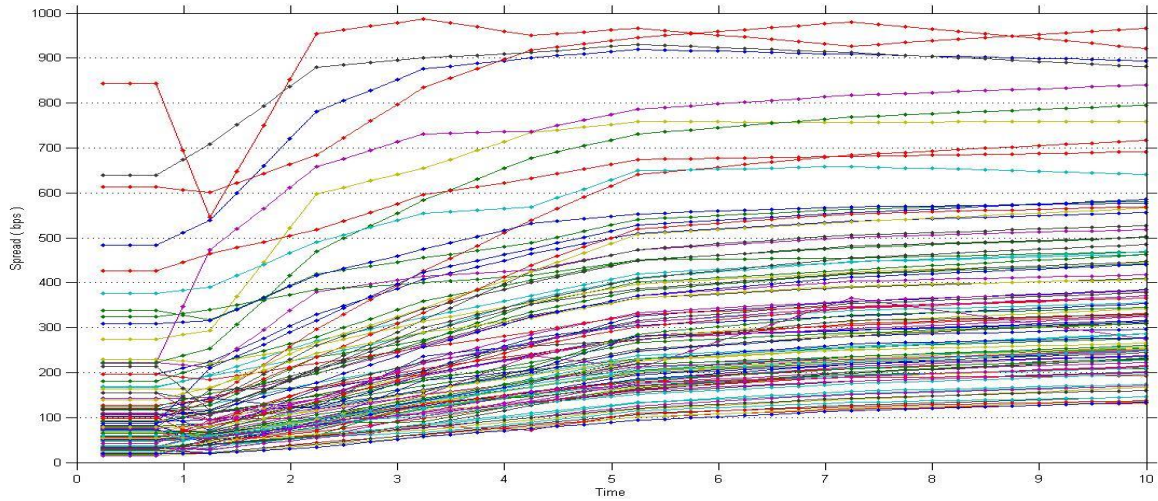


Figure 1. Market-it spreads on 22/06/2006 of the CDX.NA.HY series 6 basket components

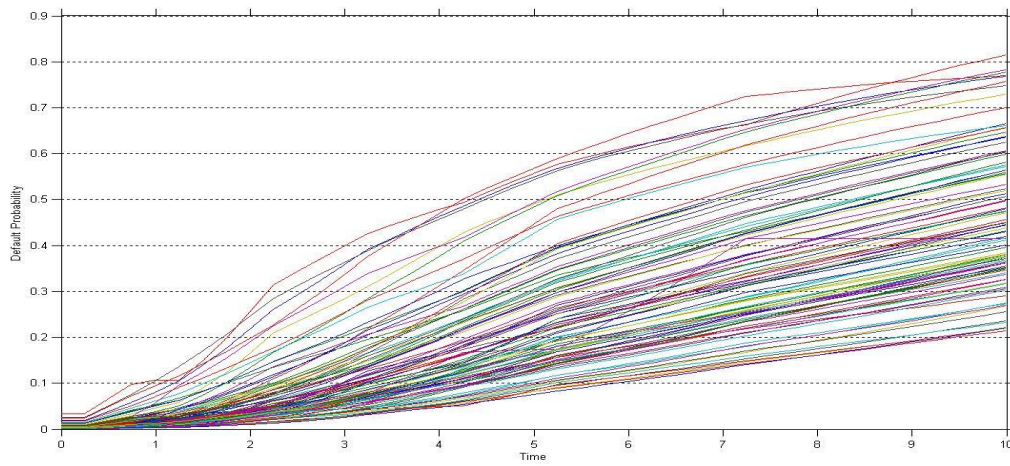


Figure 2. Implied probability of defaults of the Market-it spreads on 22/06/2006 of the CDX.NA.HY series 6 basket components

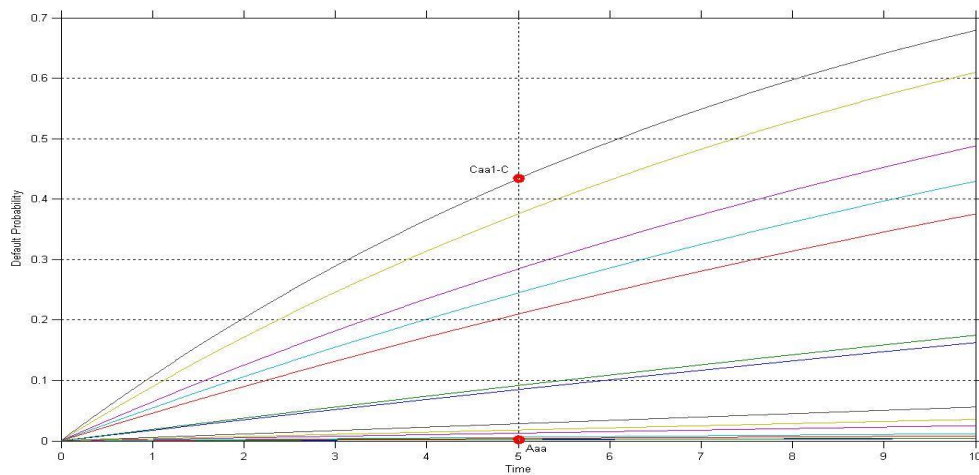


Figure 3. PD with constant hazard rate matching the 5 years PD of the Moody's Credit ratings from Aaa to Caa1-C

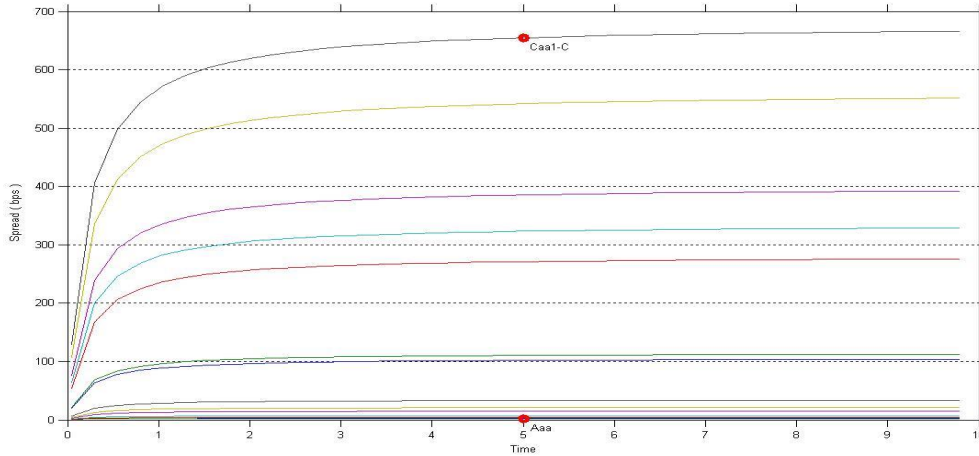


Figure 4. PD implied theoretical spreads. The PD are obtained constructing constant hazard rate survival probability functions matching the 5 years PD of the Moody's credit ratings from Aaa to Caa1-C

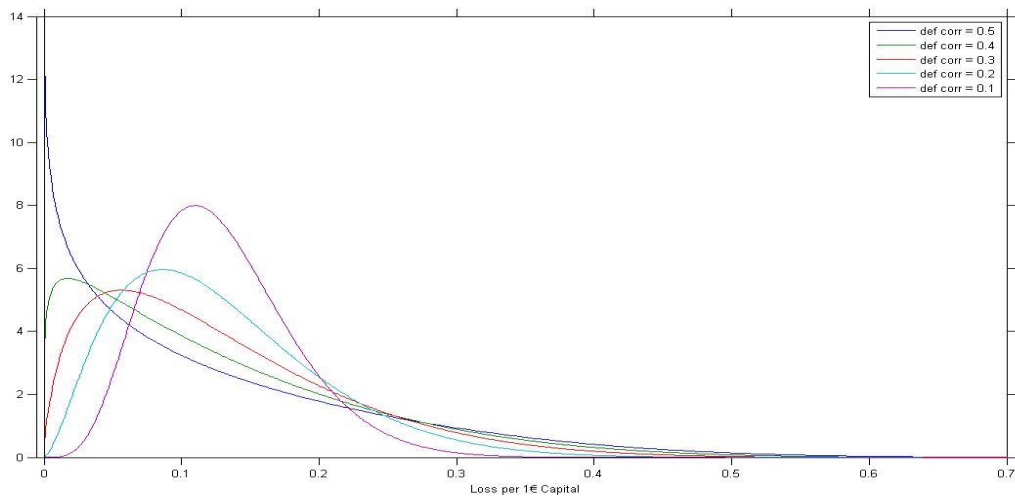


Figure 5. Loss given default distribution function for an equally weighted 1400 items basket (Aaa to Caa1-C) at different levels of correlations. The LGD is evaluated over the 5 year period 03/12/2010 to 20/12/2015.

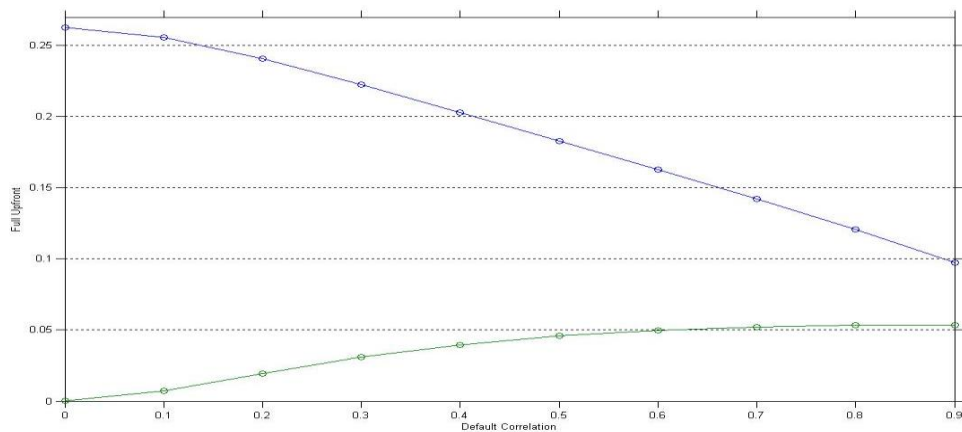


Figure 6. Full upfront CDO tranche prices at different default correlations of the tranches 0 - 4% and 4 - 8% of the portfolio Q.9

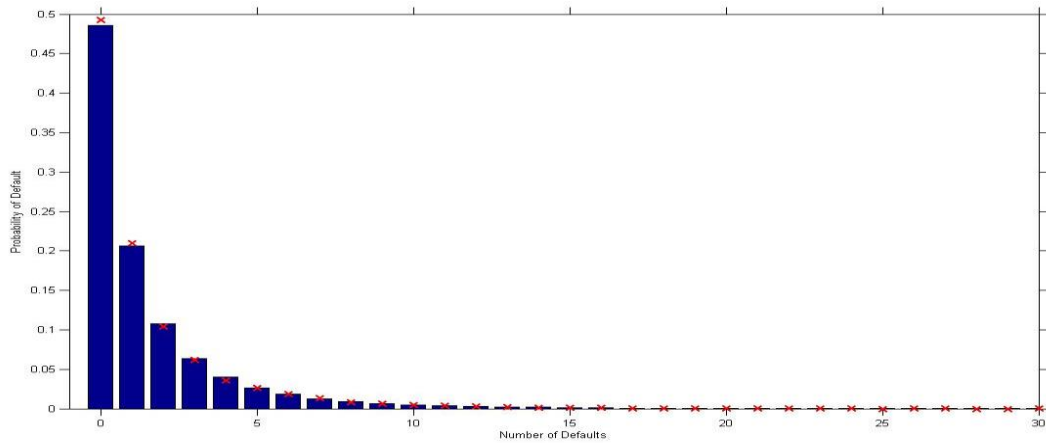


Figure 7. Theoretical probabilities (blue bars) and empirical frequencies (red crosses) of the number of defaults of the portfolio Q on maturity

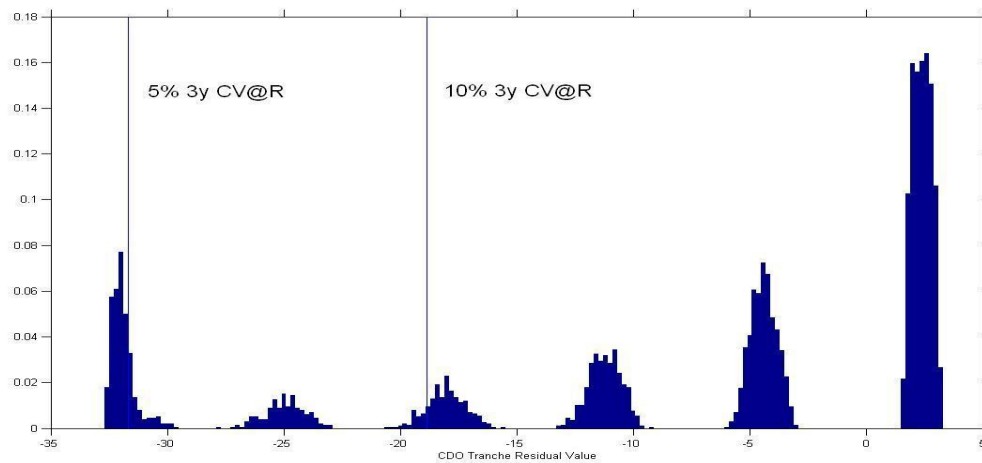


Figure 8. Detail of the histogram of the forward value of the 0 - 4% equity tranche on the portfolio Q. The detail excludes the 0 default distribution sub-sample. Time of recording is the maturity 20/12/2013

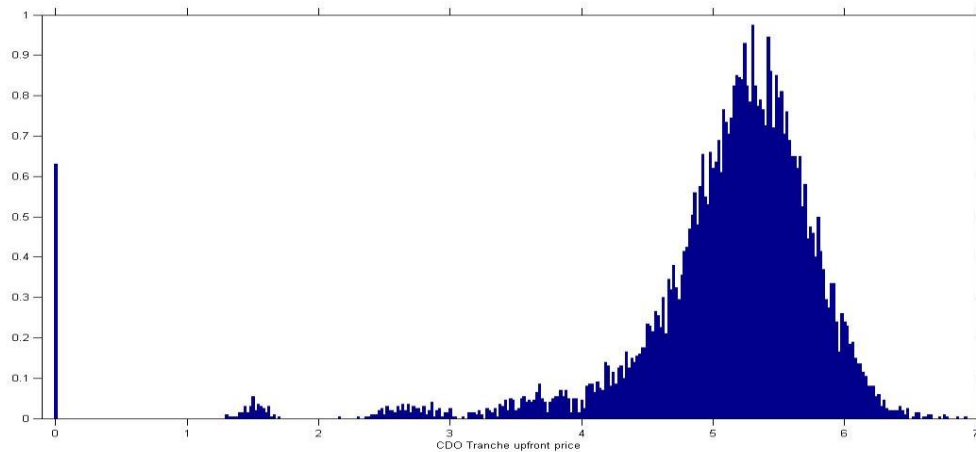


Figure 9. Histogram of the simulated market prices (full upfront) of the evolution of the 0 - 4% equity tranche on the portfolio Q generated on 21/12/2011

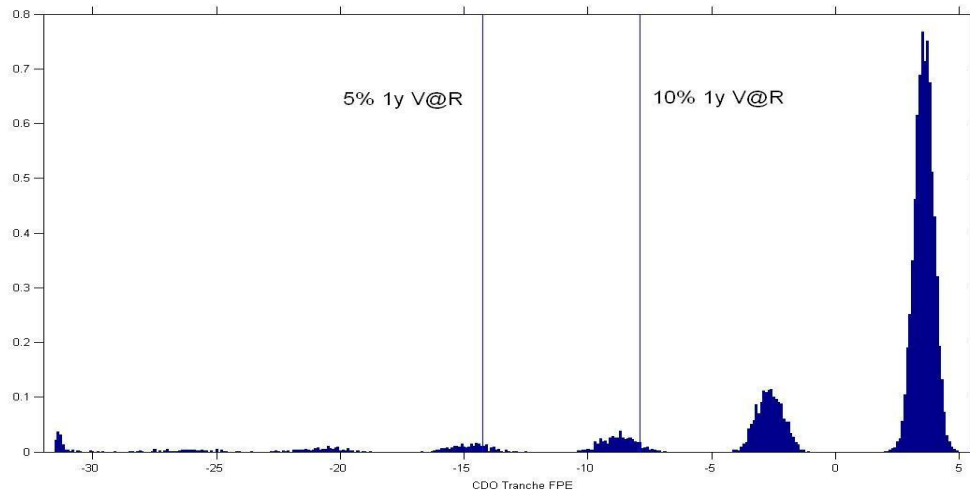


Figure 10. Total FPE of the 0 - 4% equity tranche on the portfolio Q generated on 21/12/2011

Table 1. Moody's Estimated Default Frequency over different annual horizons

Rating	1	2	3	4	5	6	7	8
Aaa	0.00%	0.00%	0.00%	0.06%	0.20%	0.28%	0.37%	0.48%
Aa1	0.00%	0.00%	0.00%	0.23%	0.23%	0.39%	0.39%	0.39%
Aa2	0.00%	0.00%	0.06%	0.20%	0.45%	0.55%	0.66%	0.79%
Aa3	0.07%	0.10%	0.19%	0.29%	0.41%	0.55%	0.55%	0.55%
A1	0.00%	0.03%	0.33%	0.52%	0.66%	0.82%	0.89%	0.97%
A2	0.00%	0.03%	0.14%	0.39%	0.60%	0.79%	0.91%	1.24%
A3	0.00%	0.13%	0.25%	0.34%	0.40%	0.53%	0.78%	0.88%
Baa1	0.04%	0.26%	0.52%	0.90%	1.28%	1.55%	2.00%	2.27%
Baa2	0.07%	0.33%	0.60%	1.18%	1.80%	2.45%	2.79%	2.93%
Baa3	0.31%	0.81%	1.34%	2.15%	2.84%	3.82%	4.73%	5.66%
Ba1	0.62%	2.13%	3.86%	6.30%	8.49%	10.69%	12.19%	13.67%
Ba2	0.53%	2.58%	5.05%	7.32%	9.16%	10.51%	11.86%	12.76%
Ba3	2.52%	6.96%	11.89%	16.47%	20.98%	25.05%	28.71%	32.61%
B1	3.46%	9.29%	14.81%	19.63%	24.48%	29.79%	34.85%	38.35%
B2	6.88%	13.95%	20.28%	24.84%	28.45%	31.16%	32.57%	34.39%
B3	12.23%	20.71%	27.27%	32.53%	37.54%	40.66%	43.95%	47.84%
Caa1-C	19.09%	28.37%	34.23%	40.07%	43.37%	47.73%	47.73%	51.33%
Investment-Grade	0.04%	0.15%	0.33%	0.59%	0.82%	1.08%	1.27%	1.46%
Speculative-Grade	3.68%	8.26%	12.66%	16.56%	20.17%	23.38%	26.17%	28.73%
All Corporates	1.20%	2.65%	4.01%	5.22%	6.28%	7.19%	7.92%	8.57%

References

1. Brigo, D., Morini, M. *CDS Market Formulas and Models*, Invited presentation at XVIII Warwick Option Conference.
2. Hyder, I.U. 2008 *The Barclays Capital Guide to Cash Flow Collateralized Debt Obligations*, Barclays Capital
3. Li, David, X. 2000. On Default Correlation: A Copula Function Approach, *Journal of Fixed Income* 9: 43-54.
4. Zhen, Wei, *Credit Risk: Modeling and Application*, Stanford University.

The author has many years of experience in Risk Management for several asset management companies. Recently he has been affiliated with the School of Electronics and Computer Science at the University of Southampton (UK). Current affiliation: INRA, Jouy-en-Josas, Paris (FR).

ASERS Publishing
ASERS

ASERS Publishing
Web: www.asers.eu
URL: <http://www.asers.eu/asers-publishing>
ISSN 2068 – 7710