

ASERS

Journal of Environmental Management and Tourism

Quarterly

Volume XV

Issue 4(76)

Winter 2024

ISSN 2068 – 7729

Journal DOI

<https://doi.org/10.14505/jemt>

ASERS
Publishing



Call for Papers
Spring Issue 2025
Journal of Environmental Management and Tourism

Issue 4(76)

Editor in Chief:

Ramona Pirvu,
University of Craiova, Romania

Co-Editor:

Cristina Mihaela Barbu,
Spiru Haret University, Romania

Editorial Advisory Board:

Omran Abdelnaser, University Sains
Malaysia, Malaysia

Huong Ha, Singapore University of Social
Sciences, Singapore

Harjeet Kaur, HELP University College,
Malaysia

Janusz Grabara, Czestochowa University of
Technology, Poland

Vicky Katsoni, Technological Educational
Institute of Athens, Greece

Sebastian Kot, Czestochowa University of
Technology, The Institute of Logistics and
International Management, Poland

Andreea Marin-Pantelescu, Academy of
Economic Studies Bucharest, Romania

Piotr Misztal, The Jan Kochanowski
University in Kielce, Faculty of Management
and Administration, Poland

Agnieszka Mroziak, Faculty of Biology and
Environmental Protection, University of
Silesia, Katowice, Poland

Chuen-Chee Pek, Nottingham University
Business School, Malaysia

Roberta De Santis, LUISS University, Italy

Fabio Gaetano Santeramo, University of
Foggia, Italy

Dan Selisteanu, University of Craiova,
Romania

Lesia Kucher, Lviv Polytechnic National
University, Ukraine

Lóránt Dénes Dávid, Eötvös Loránd
University, Hungary

Laura Ungureanu, Spiru Haret University,
Romania

Sergey Evgenievich Barykin, Peter the
Great St. Petersburg Polytechnic University,
Russian Federation

Omar Abedalla Alananzeh, Faculty of
Tourism and Hotel Management, Yarmouk
University, Jordan

Marco Martins, Polytechnic Institute of
Tomar, Portugal

Konstantinos Antoniadis, University of
Macedonia Thessaloniki, Greece

ASERS Publishing

<http://www.asers.eu/asers-publishing>

ISSN 2068 – 7729

Journal DOI: <https://doi.org/10.14505/jemt>

Table of Contents

1	The Essence of Green Participatory Budgeting Małgorzata SIEMIONEK-RUSKAŃ, Anna SIEMIONEK-LEPCZYŃSKA	601
2	Assessing Patterns of Tourism Seasonality in a Mixed Heritage Island Site Laura SHUMKA	608
3	Village-Based Waste Management System: The Study Case in Borobudur Sub-District, Indonesia Siti WAHYUNINGSIH, Tuti SUSILOWATI, Hadi ASHAR, Avry PRIBADI, Teguh SATYAJI, SUKAMSI, PURWATI, Dhanik ERNAWATI	616
4	Evidence of Climate Change Impact on Quantity of Rice-Planted Areas in Panama Ronny SUAREZ	626
5	Social, Cognitive and Traditional Motives in Christmas Market Tourism: A Case Study from Poland Anna MŁYNKOWIAK-STAWARZ, Robert BĘBEN	629
6	The Rise of Tennis Tourism: Motivations, Experiences, and Economic Impact of Traveling Fans Alexandru-Nicolae BANCIU, Irina-Valentina TUDOR, Cristina POPÎRLAN	640
7	The Potential for Sustainable Tourism Development in Small-Scale Regions: A Case Study of Sulejów Municipality Waldemar CUDNY, Justyna PALUCH	647
8	Economic Effects of Sports Events in Tourism. Case Study EURO 2024 Mădălina CONSTANTINESCU, Lorin UNGUREANU	664

Call for Papers Winter Issues 2023 Journal of Environmental Management and Tourism

Journal of Environmental Management and Tourism is an open access, peer-reviewed interdisciplinary research journal, aimed to publish articles and original research papers that contribute to the development of both experimental and theoretical nature in the field of Environmental Management and Tourism Sciences. The Journal publishes original research and seeks to cover a wide range of topics regarding environmental management and engineering, environmental management and health, environmental chemistry, environmental protection technologies (water, air, soil), pollution reduction at source and waste minimization, energy and environment, modelling, simulation and optimization for environmental protection; environmental biotechnology, environmental education and sustainable development, environmental strategies and policies.

Authors are encouraged to submit high quality, original works that discuss the latest developments in environmental management research and application with the certain scope to share experiences and research findings and to stimulate more ideas and useful insights regarding current best-practices and future directions in Environmental Management.

Also, this journal is committed to a broad range of topics regarding Tourism and Travel Management, leisure and recreation studies and the emerging field of event management. It contains both theoretical and applied research papers and encourages obtaining results through collaboration between researchers and those working in the tourism industry.

The journal takes an interdisciplinary approach and includes planning and policy aspects of international, national and regional tourism as well as specific management studies. Case studies are welcomed when the authors indicate the wider applications of their insights or techniques, emphasizing the global perspective of the problem they address.

Journal of Environmental Management and Tourism is indexed in RePEc, CEEOL, ProQuest, EBSCO, DOAJ and Cabell Directory databases.

Details regarding the publication in this journal are here: <https://journals.aserspublishing.eu/jemt/about>

Deadline for submission:	15 st January 2025
Expected publication date:	February 2025
Website:	https://journals.aserspublishing.eu/jemt
E-mail:	jemt@aserspublishing.eu



DOI: [https://doi.org/10.14505/jemt.v15.4\(76\).04](https://doi.org/10.14505/jemt.v15.4(76).04)

Evidence of Climate Change Impact on Quantity of Rice-Planted Areas in Panama

Ronny SUAREZ
Independent Researcher, USA
suarezronny@yahoo.com

Article info: Invited Author; Published 29 November 2024. Copyright© 2024 The Author(s). Published by ASERS Publishing 2024. This is an open access article distributed under the terms of CC-BY 4.0 license.

Abstract: This paper provides statistical evidence of a positive correlation between anomaly precipitation and the variation of planted hectares of rice. Panamanian farmers reduce planted areas of rice when they experience lower levels of rain.

Keywords: climate change; Panama; rice production.

JEL Classification: Q18; Q52; Q54.

Introduction

In 2023, the Panama Canal experienced an unprecedented drought that made international news headlines due to its impact on ship transit and global trade.

'El Niño' phenomenon lengthened the dry season and reduced rainfall in 2023, affecting the agricultural sector, too. Specifically, the rice sector recorded a 7.1% reduction in the hectares of rice planted, decreasing from 95,182 hectares in 2022 to 88,401 hectares in 2023 (Ministry of Agricultural Development, 2024).

This paper is organised as follow: The first section presents how climate threats can affect rice production. The second section describes the results obtained for the relationship between abnormal rainfall and the variation of hectares planted with rice in the country. The last section provides conclusions.

Rice Production and Climate Treats

Rice cultivation depends on climatic conditions such as temperature, precipitation, and water availability; extreme temperature variations and lack or excess rainfall impact crop productivity.

Greater frequency and intensity of droughts and floods reduce rice production, (Serey, S. et. al., 2021) and temperature rise reduces growth duration and grain filling duration, resulting in lower yield and lower quality rice grain (Jagadish. K., et.al., 2009).

Between 1971 – 2020, Panama experienced a mean temperature increase of 1.1°C and a decrease in precipitation of 140.9 mm (Climate Change Knowledge Portal, 2024).

If temperature increases continue and there are reductions in accumulated precipitation, the rice production levels will decline; if farmers do not adapt to climate change, the country will have a deterioration of future rice harvests (Mora, J. et al. 2010).

Statistical Evidence

With the agricultural closure information from the Ministry of Agricultural Development (MIDA), we evaluate the percentage change in the number of hectares of rice cultivated for the period 2010-2023 and its correlation with the anomaly precipitation levels of each year obtained from the MeteoBlue.com site.

The following table shows the data for the analysis period that generated a correlation coefficient of 0.705. This coefficient shows us that there is a positive relationship between precipitation and variation of rice-planted areas. The higher the amount of rainfall, the higher the level of rice-cultivated hectares, and vice versa, the less amount of rainfall, the lower the level of hectares that farmers proceed to plant with rice.

Agricultural Closure			Hectares planted	Variation	Anomalous Precipitation
2010	-	2011	64,218		
2011	-	2012	67,048	4.4%	-82.1
2012	-	2013	63,754	-4.9%	-255.5
2013	-	2014	67,073	5.2%	-237.3
2014	-	2015	52,428	-21.8%	-407.6
2015	-	2016	57,066	8.8%	103.4
2016	-	2017	66,231	16.1%	-219.0
2017	-	2018	70,937	7.1%	-3.0
2018	-	2019	72,033	1.5%	-377.2
2019	-	2020	74,635	3.6%	-88.2
2020	-	2021	87,635	17.4%	279.8
2021	-	2022	95,182	8.6%	170.3
2022	-	2023	88,401	-7.1%	-328.5
Correlation Coefficient (r):					0.705

To validate the statistical significance of the obtained Pearson Correlation Coefficient, a Student's T-test is applied given the following steps:

- Step One. Statement of the Null Hypothesis and the Alternative Hypothesis:

$H_0: r=0$ There is no relationship between the level of rainfall and the variation in the number of hectares cultivated with rice.

$H_1: r \neq 0$ There is a relationship between the level of rainfall and the variation in the number of hectares cultivated with rice.

- Step Two. We calculate the Student's T-statistic:

$$\frac{r\sqrt{n-2}}{\sqrt{1-r^2}} = \frac{0.705\sqrt{12-10}}{\sqrt{1-0.705^2}} = 3.14$$

- Step Three. We establish the Student's T-Table Value:

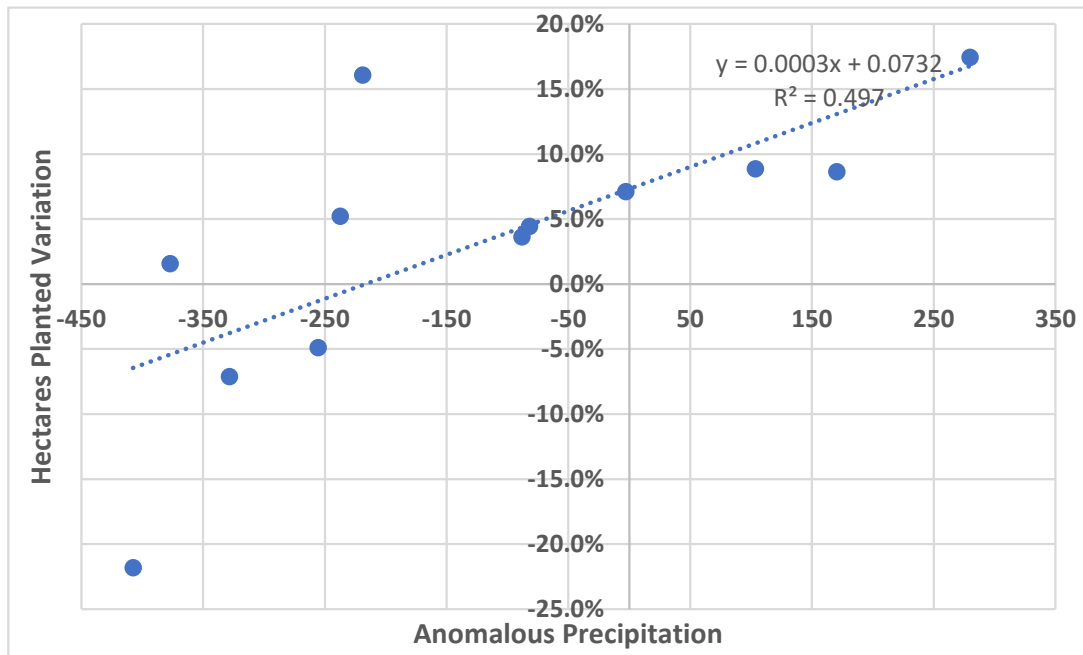
At a significance level of 2.5% (two-tailed), for ten (10) degrees of freedom, the Student's T-Table Value is -2.22. [Excel Function INV.T (2.5%;10)]

- Step Four. We make a decision:

As the Student's T-statistic is less than the Student's T-Table Value ($-2.22 < 3.14$), we reject the Null Hypothesis; thus, we conclude that at a significance level of 2.5%, there is a relationship between the variation of planted hectares and the level of anomaly precipitation of the year.

Conclusions

The next graph shows the positive correlation between anomaly precipitation and the variation of planted hectares of rice.



Therefore, a lower rainfall level in the country and the higher presence and intensity of droughts can reduce rice production through crop loss, lower yield per hectare, and lower sowing of cultivated areas. Panama produces 88% of national rice using the rainfed system. Rainfed production depends on rainfall levels. Consequently, farmers anticipating or suffering from low availability of rainwater tend to reduce their rice-planted areas.

Declaration of Competing Interest

The author declares that he has no conflict of interest regarding the publication of this paper.

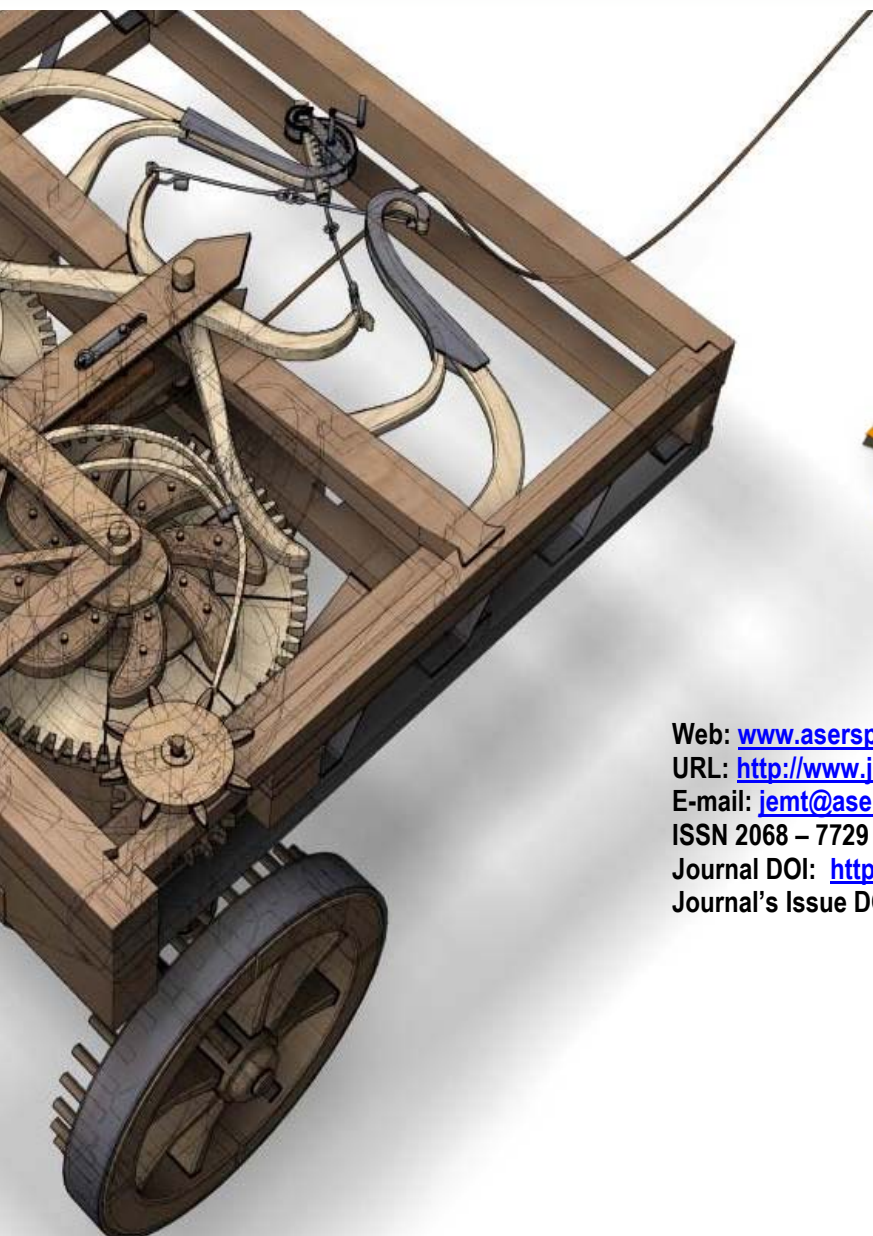
Declaration of Use of Generative AI and AI-Assisted Technologies

The author declares that he has not used generative AI and AI-assisted technologies during the preparation of this work.

References

- [1] Jagadish. K., et.al. (2009). Regional vulnerability of climate change impacts on Asian rice production and scope for adaptation. *Advances in Agronomy*. Vol. 102.
- [2] Mora, J. et al. (2010). Panama: Effects of climate change on agriculture. CEPAL.
- [3] Serey, S. et. al. (2021). Climate Change Impacts on Rice Cultivation: A Comparative Study of the Tonle Sap and Mekong River. *Sustainability*. Vol. 13(16).
- [4] Climate Change Knowledge Portal. (2024). Climate Risk Profile: Panama. World Bank.
- [5] Ministry of Agricultural Development (MIDA). (2024). Agricultural Closure 2022-2023.

ASERS



The logo for ASERS Publishing, featuring the word "ASERS" in a bold, orange, sans-serif font with a stylized fan-like graphic to the left, and the word "Publishing" in a smaller, orange, sans-serif font below it.

Web: www.aserspublishing.eu

URL: <http://www.journals.aserspublishing.eu/jemt>

E-mail: jemt@aserspublishing.eu

ISSN 2068 – 7729

Journal DOI: <https://doi.org/10.14505/jemt>

Journal's Issue DOI: [https://doi.org/10.14505/jemt.v15.4\(76\).00](https://doi.org/10.14505/jemt.v15.4(76).00)